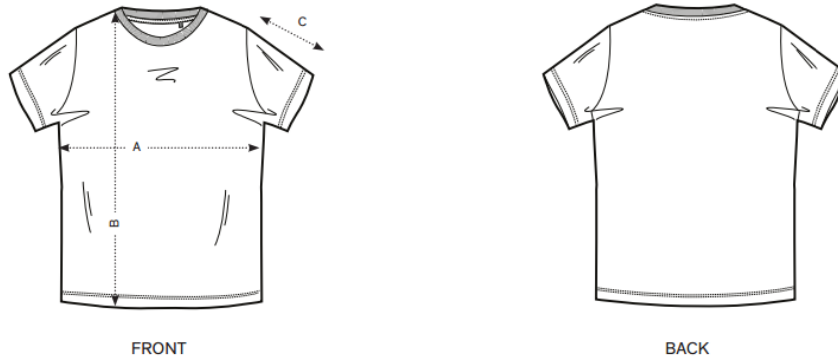
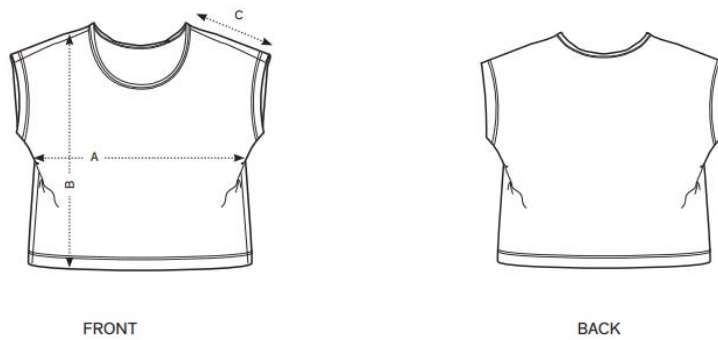


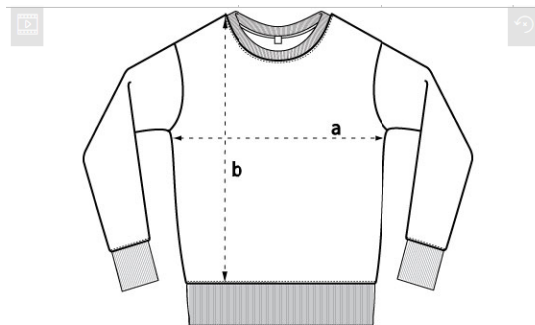
Getting the perfect fit is easy. Just grab your favourite, lay it flat on a table, take a few measurements and pick the closest matching. If you are in between 2 sizes always go on the larger, chances are your favourite has shrunk a little since you got it. If in doubt, go on the bigger size!



SIZES		XS	S	M	L	XL	XXL	XXXL
A	Half Chest 2,5cm below armhole	45	48	51	54	57	60	63
B	Body Length (from HPS)	67,5	69,5	71,5	73,5	75,5	77,5	79,5
C	Sleeve length	18,5	19,5	20,5	21,5	22,5	23,5	24,5



SIZES		XXS	XS	S	M	L
A	Half Chest 2,5cm below armhole	55	57,5	60	62,5	65,5
B	Body Length (from HPS)	53	55	57	59	61
C	Sleeve length	15	15,5	16	16,5	17



	XS	S	M	L	XL	XXL	
a	18 3/4	20	21 1/4	22 1/2	23 1/2	24 3/4	inch
	48	51	54	57	60	63	cm
b	24	24 3/4	25 1/2	26 1/2	27 1/4	28	inch
	61	63	65	67	69	71	cm